

An abstract graphic consisting of several horizontal and vertical brushstrokes in various shades of grey and black, set against a dark teal background. The strokes are layered and textured, creating a sense of movement and depth.

ACUSTICO 12

viva
MADE

12

il suono della terracotta,
colori **polverosi**

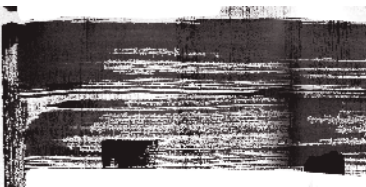
The sound of terracotta, dusty colours.
Le chant de la terre cuite, des couleurs poudrées.
Der Klang von Terrakotta, staubige Farben.
El sonido de la terracota, colores pulverulentos.
Звук терракоты, пыльные цвета.



COTTO NAT. RETT.
60x120 - 23^{5/8}"x47^{1/4}"



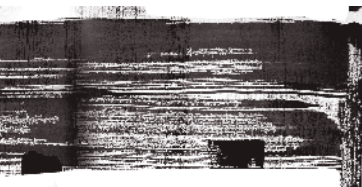
COTTO NAT. RETT.
60x120 - 23^{5/8}"x47^{1/4}"



WHITE NAT. RETT.
60x120 - 23⁵/₈"x47¹/₄"







WHITE NAT. RETT.
60x120 - 23⁵/₈"x47¹/₄"

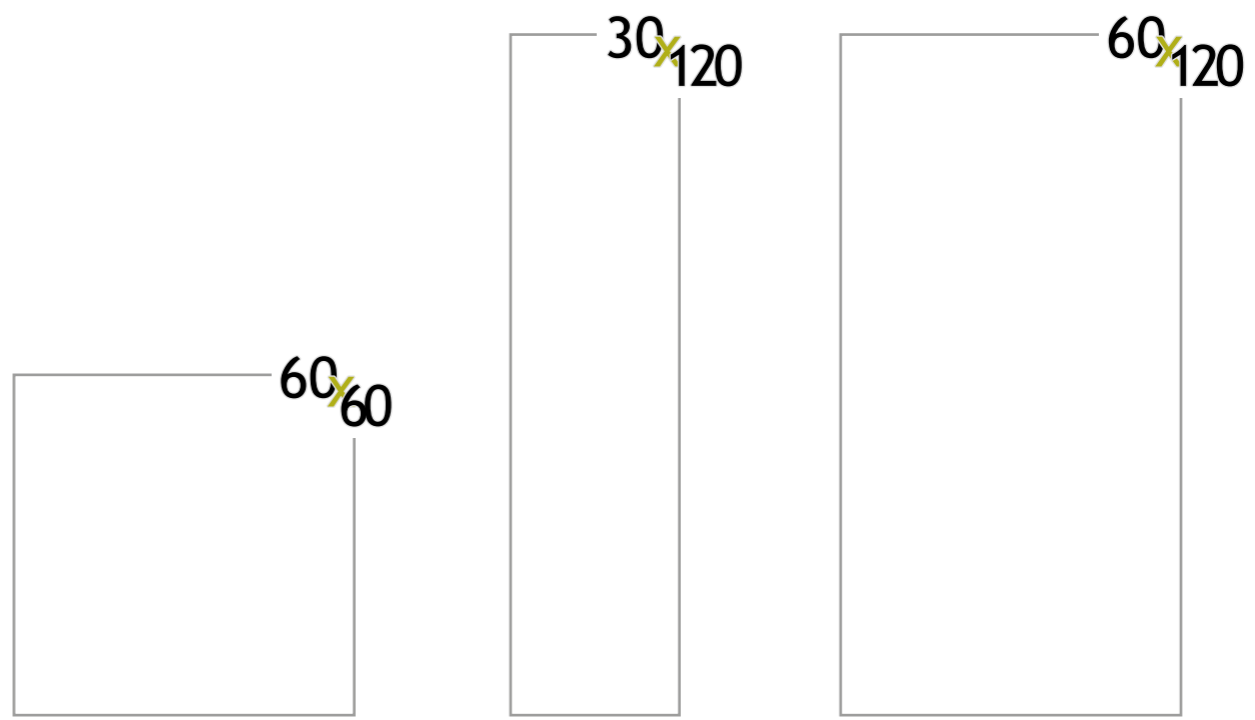




forme ampie e armonia

Ample dimensions and harmony

differences / analogies



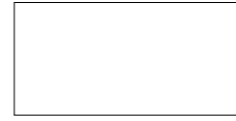
ACUSTICO 12

COLORI E FORMATI

Colours and Sizes | Couleurs et Formats | Farben und Formate | Colores y Tamaños | Цвета и Форматы

White

9,5 mm.



Naturale Rett.
60x120 - 23^{5/8}"x47^{1/4}"
E7CP White ● T31
E7CQ Cotto ● T31



Naturale Rett.
30x120 - 11^{3/16}"x47^{1/4}"
E22J White ● T63
E22K Cotto ● T63



Naturale Rett.
60x60 - 23^{5/8}"x23^{5/8}"
E22P White ● T17
E22Q Cotto ● T17

Cotto



ACUSTICO 12

PEZZI SPECIALI

Trims | Pieces Speciales | Formteile | Piezas Especiales | Специальные Изделия

	Dimensione Size	White	Cotto	Fascia di prezzo Price band
Battiscopa - Skirting	Nat. Rett. 7x60 - 2 ^{3/4} "x23 ^{5/8} " Pcs. Box. 15 - LM x Box 9,00	E28P	E28Q	● A11
Battiscopa Scala Tread Skirting	Nat. Rett. 7x60x60 2 ^{3/4} "x23 ^{5/8} "x23 ^{5/8} " Pcs. Box 2 - LM x Box 1,20	Dx - Right E93M	Dx - Right E93P	● A33
		Sx - Left E93N	Sx - Left E93Q	
Battiscopa Scala Dx Sx Tread Skirting Right Left	Nat. Rett. 7x60x60 2 ^{3/4} "x23 ^{5/8} "x23 ^{5/8} " Pcs. Box 2 - LM x Box 1,20	Dx - Right E2VX	Dx - Right E940	● A33
		Sx - Left E93Z	Sx - Left E941	
Gradone - Step	Nat. Rett. 33x120x3,2x3,2 12 ^{5/16} "x47 ^{1/4} "x1 ^{1/4} "x1 ^{1/4} " Pcs. Box 2 - LM x Box 2,40	E8E2	E8E3	● A98
Angolare Dx Sx Corner Tile Right Left	Nat. Rett. 33x120x3,2x3,2 12 ^{5/16} "x47 ^{1/4} "x1 ^{1/4} "x1 ^{1/4} " Pcs. Box 1 - LM x Box 1,20	Dx - Right E8DQ	Dx - Right E8DR	● A104
		Sx - Left E28D	Sx - Left E8DS	
Angolare - Corner Tile	Nat. Rett. 33x33x3,2x3,2 12 ^{5/16} "x12 ^{5/16} "x1 ^{1/4} "x1 ^{1/4} " Pcs. Box 2 - LM x Box 0,66	E8E7	E8E8	● A72

IMBALLI E PESI

Packing and Weight | Emballages et Poids | Verpackung und Gewicht | Embalajes y Pesos | Упаковка и вес

Formato Size Format Format Tamaño Формат cm	Spessore Thickness Epaisseur Stärke Espesor Толщина mm	Pz. x Mq. Pieces x Sqm Pcs / M ² Stk. x Qm Pzs x Mc. Штм x Кв.М.	Pz. x Scat. Pieces x Box Pcs / Bte Stk. x Krt. Pzs x Caja Штм x Кор.	Mq. x Scat. Sqm x Box M ² / Bte Qm x Krt. Кв.М. x Кор.	Peso x Scat. Weight x Box Poids / Bte Gewicht x Krt. Peso x Caja Вес x Кор. Kg	Scat. x Pal. Boxes x Pal. Bte / Pal. Krt. x Pal. Cajas x Pal. Кор. x Палгг.	Mq. x Pal. Sqm x Pal. M ² / Pal. Qm x Pal. Кв.М x Палгг.	Peso x Pal. Weight x Pal. Poids / Pal. Gewicht x Pal. Peso x Pal. Вес x Палгг. Kg
60x120 Naturale	9,5	1,39	2	1,440	31,68	36	51,84	1140
30x120 Naturale	9,5	2,78	3	1,080	23,76	48	51,84	1140
60x60 Naturale	9,5	2,78	3	1,080	23,76	40	43,20	950

Si consiglia la posa con fuga 2 mm. - Laying with a 2 mm-joint is recommended. - Pose recommandée avec joints de 2 mm.
Es wird eine Fugenbreite von 2 mm empfohlen. - Se recomienda la colocación con juntas de 2 mm. - Рекоменгується укладка с швом 2 мм.

Verificare l'abbinamento dei toni tra i formati differenti. - Check the colour matching between different sizes.
Vérifier l'assortiment des tonalités entre les différents formats. - Die Kombination der Farbtöne unter den verschiedenen Formaten prüfen.
Comprobar la combinación de los tonos entre los distintos formatos. - Проверьте сочетание тонов у разных форматов.

ACUSTICO 12

Porcelain Tiles
ISO 13006 Annex G - UNI EN 14411 Annex G - Bla GL
ANSI A137.1 - CLASS P1



CARATTERISTICHE TECNICHE Technical Features - Caracteristiques Techniques - Technische Eigenschaften Technische Eigenschaften - Características Técnicas - Технические Характеристики	NORMA Standard - Norme Norm - Norma - Норма	VALORI Value - Valeur Vorgabe - Valor - Средние
ASSORBIMENTO D'ACQUA Water absorption - Absorption d'eau - Wasseraufnahme Absorción de agua - Поглощение воды	UNI EN ISO 10545/3 ASTM C373	CONFORME COMPLIANT
RESISTENZA ALLA FLESSIONE Modulus of rupture - Resistance a la flexion - Biegefestigkeit Resistencia a la flexion - Прочность на изгиб	UNI EN ISO 10545/4	≥ 45 N/mm ²
FORZA DI ROTTURA Breaking strength - Résistance à la rupture - Bruchlast Resistencia a la rotura - Разрывное усилие	UNI EN ISO 10545/4 ASTM C648	≥ 2000 N ≥ 400 lbf
RESISTENZA AL GELO Frost resistance - Résistance au gel - Frostbeständigkeit Resistencia a las heladas - Морозостойкость	UNI EN ISO 10545/12 ASTM C1026	CONFORME UNAFFECTED
RESISTENZA CHIMICA AD ALTE E BASSE CONCENTRAZIONI DI ACIDI E BASI Chemical resistance to high and low acid and basic concentrations Résistance chimique aux hautes et basses concentrations d'acides et de bases Chemikalienfestigkeit bei hohen und niedrigen Konzentrationen von Säuren und Basen Resistencia química con concentraciones altas y bajas de ácidos y bases Химическая стойкость к высоким и низким концентрациям кислот и щелочей	UNI EN ISO 10545/13 ASTM C-650	A - LA - HA UNAFFECTED
RESISTENZA ALLE MACCHIE Stain resistance - Résistance aux taches - Fleckenbeständigkeit Resistencia a las manchas - Стойкость к образованию пятен	UNI EN ISO 10545/14 ASTM C1378	5 Class A
COEFFICIENTE DI ATTRITO Slip resistance Coefficient de glissement Rutschfestigkeit Barfußbereich Coeficiente de atrito medio Коэффициент трения	DIN EN 16165 Annex B DIN EN 16165 Annex A ANSI A326.3:2017 DCOF B.C.R.A. D.M. N. 236 14/6/89 AS 4586-2013 Anexo A BS 7976-2: 2002 BSEN13036-4:2011 Pendulum testers UNE 41901:2017 EX DB SUA (actual)	R10 B (A+B) WET ≥ 0,50 ≥ 0,40 P2 < 36 Moderate Slip potential 2

Per maggiori chiarimenti sui dati tecnici e sulla garanzia consultare il catalogo generale in vigore. - For further information on technical specifications, please consult our up-dated general catalogue. - Pour toutes informations supplémentaires sur les données techniques et sur les garanties, veuillez consulter le catalogue général en vigueur. - Für weitere Informationen über technische Daten und Garantiebeziehungen siehe bitte auf den aktuellen Gesamtkatalog. - Para ulteriores informaciones sobre los datos técnicos y la garantía, vease el catalogo general en vigor. - Более подробную информацию о технических данных и гарантии смотрите в действующем сводном катал.



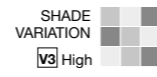
PRODUCT CERTIFIED
FOR LOW CHEMICAL
EMISSIONS:
UL/COM/FGG
UL 2818
GOLD



放射性水平A类



15% 9,5 mm
valori medi - average values



VIVA
MADE



I colori e le caratteristiche estetiche dei materiali illustrati nel presente catalogo sono da ritenersi puramente indicativi. Le misure dei prodotti qui indicate si intendono nominali e come i pesi ed i colori subiscono le variazioni tipiche del processo ceramico. Viva si riserva la facoltà di modificare in qualunque momento senza preavviso le caratteristiche tecniche, estetiche e i materiali presentati. Tali caratteristiche non sono comunque vincolanti nei termini legali.

Colours and optical features of the materials illustrated in this catalogue are to be regarded as mere indications. Product sizes indicated are nominal and like weights and colours undergo the typical variations of the ceramic process. Viva reserves the right to change the technical and optical features of the materials illustrated at any time and without notice. These features are not legally binding.



Viva is a brand of Emilceramica S.r.l. a socio unico	Sede Commerciale/ Amministrativa
emilgroup.it/viva emilgroup.it	Via Ghiarola Nuova, 29 - 41042 Fiorano Modenese (Mo) Italy T +39 0536 835111 - info@emilceramicagroup.it